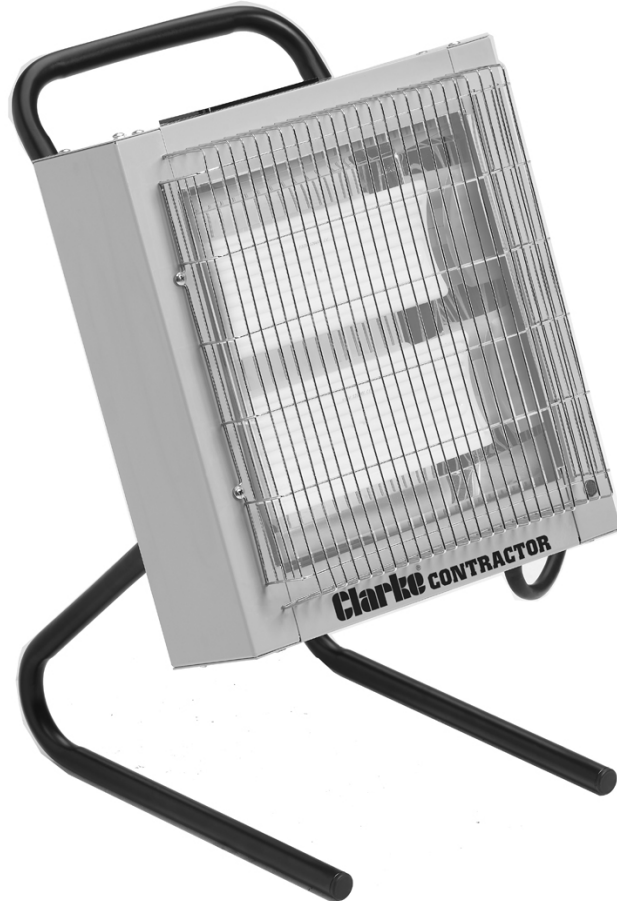


# CLARKE<sup>®</sup>

## CONTRACTOR<sup>®</sup>



### CERAMIC HEATER

MODEL NO: DEVIL 351C

PART NO: 6920256

## OPERATING & MAINTENANCE INSTRUCTIONS

UK  
CA | CE



ORIGINAL INSTRUCTIONS

DL1123 Rev 1

---

# INTRODUCTION

---

Thank you for purchasing this CLARKE Ceramic Heater.

Before attempting to use this product, please read this manual thoroughly and follow the instructions carefully. In doing so you will ensure the safety of yourself and that of others around you, and you can look forward to your purchase giving you long and satisfactory service.

## GUARANTEE

This product is guaranteed against faulty manufacture for a period of 12 months from the date of purchase. Please keep your receipt which will be required as proof of purchase.

This guarantee is invalid if the product is found to have been abused or tampered with in any way, or not used for the purpose for which it was intended.

Faulty goods should be returned to their place of purchase, no product can be returned to us without prior permission.

This guarantee does not effect your statutory rights.

---

# SPECIFICATIONS

---

Model Number	Devil 351C
Part Number	6920256
Weight	8.6 kg
Dimensions (L x W x H)	610 x 410 x 400mm
Rated input Current	21.8A
Supply Voltage	110V/50 Hz
Plug Rating	32 A
Ingress Protection Class	IP20
Max Heat Output	2.4W (1.2 per element)

Please note that the details and specifications contained herein, are correct at the time of going to print. However, CLARKE International reserve the right to change specifications at any time without prior notice.

**THE FOLLOWING TABLE ADDRESSES THE INFORMATION REQUIREMENTS OF REG.2015/1188**

Item	Symbol	Value	Unit
<b>Heat output</b>			
Measured seasonal space heating energy efficiency			35%
Nominal heat output	$P_{nom}$	2.4	kW
Minimum heat output (indicative)	$P_{min}$	1.2	kW
Maximum continuous heat output	$P_{max}$	2.4	kW
<b>Auxiliary electricity consumption</b>			
At nominal heat output	$el_{max}$	n/a	kW
At minimum heat output	$el_{min}$	n/a	kW
In standby mode	$el_{SB}$	0.001	kW
<b>Type of heat input for electric storage local heaters only</b>			
Manual heat charge control with integrated thermostat			No
Manual heat charge control with room and/or outdoor temperature feedback			No
Electronic heat charge control with room and/or outdoor temperature feedback			No
Fan assisted output			No
<b>Type of heat output/room temperature control (select one)</b>			
Single stage heat output, no temperature control			No
With mechanical thermostat temp control			No
With electronic temperature control			Yes
Electronic temperature control with day timer			No
Electronic temperature control with week timer			No
<b>Other control options (multiple selections possible)</b>			
Room temperature control with presence detection			No
Room temperature control with open window detection			Yes
Room temperature control with distance control option			No
Room temperature control with adaptive start control			No
Room temperature control with working time limitation			Yes
Room temperature control with black bulb sensor			Yes

---

## SAFETY RULES

---

Make sure that you read, understand and comply with the following.



**WARNING: THIS PRODUCT IS ONLY SUITABLE FOR WELL INSULATED AREAS AND IS NOT DESIGNED TO BE THE PRIMARY HEAT SOURCE.**

---

### SAFE WORKING PRACTICES

1. **DO NOT** operate the heater when you are tired or under the influence of alcohol, drugs or intoxicating medication.
2. **DO NOT** stand on the heater.
3. **DO NOT** use the heater with wet hands or when there is water on the power cable.
4. Turn the heater off when not in use and keep it in a safe, dry location.
5. The heater is designed to heat enclosed areas, such as workshops and other industrial areas. **DO NOT** use the heater for any other function. It is not suitable for drying clothes or laundry.

### ELECTRICAL SAFETY

1. Electrical appliances must match the power outlet. **NEVER** modify the plug in any way. **DO NOT** use adaptor plugs with earthed (grounded) appliances. Correct plugs and outlets will reduce the risk of electric shock.
2. **DO NOT** abuse the electrical cable. **NEVER** use the cable for pulling or unplugging the heater. Keep the cable away from sources of heat, oil, sharp edges or moving parts. Damaged or tangled cables increase the risk of electric shock.
3. Keep the power cable well away from machines and ensure an adequate electrical supply is close at hand so that the operation is not restricted by the length of the cable.
4. **ALWAYS** disconnect from the power supply before moving the heater or performing any cleaning or maintenance tasks.
5. Inspect the mains cable regularly for signs of damage. **DO NOT** use if it is damaged, and **ALWAYS** keep it away from the source of heat.
6. Check the heater for damage before use. **DO NOT** use if the heater tubes/elements are damaged or broken. Any damage should be properly repaired or the part replaced. If in doubt, **DO NOT** use. Consult your local CLARKE dealer.

## POSITIONING

---



**WARNING: DO NOT USE THE HEATER NEAR FLAMMABLE MATERIAL, LIQUIDS, SOLIDS, GASSES OR COMPRESSED GAS CYLINDERS ETC.**

---

1. This heater is designed for indoor use only.
2. **DO NOT** use this heater in small rooms when they are occupied by persons not capable of leaving the room on their own unless constant supervision is provided.
3. **DO NOT** use this heater in the immediate surrounds of a bath, a shower, a swimming pool or wet surfaces.
4. **NEVER** place the heater against or near any surface such as a wall, door, curtains, furniture or combustible material etc. Allow at least 2 metre clearance.
5. **DO NOT** place the heater immediately below any electrical outlet.
6. **DO NOT** place the heater on a raised surface or anywhere where it could topple over. **ALWAYS** use on a horizontal and stable surface.
7. **ALWAYS** ensure that the grille cannot be blocked or covered.
8. **DO NOT** operate fan heaters in explosive atmospheres such as in the presence of flammable liquids, gasses or dust such as in a paint spray booth or any explosive environment. Electric motors create sparks which may ignite dust or fumes.
9. This heater can be used by children aged 8 and above and persons with reduced physical, sensory and mental capabilities or lack of knowledge if they have been given instruction concerning the use of appliance in a safe way and understand the hazards.
10. Children less than 3 years should be kept away unless continuously supervised.
11. Children should **NOT** play with this appliance.

## OPERATION

1. **CAUTION:** Some parts of this product can become very hot and cause burns. Particular attention should be given where children, vulnerable people and animals are present.
2. The heater must only be used by people who have read these instructions and have been trained in its use.
3. **DO NOT** use if dropped.
4. **DO NOT** use if there is visible signs of damage.

5. **DO NOT** obstruct the air inlet and outlet sections of the heater.
6. **DO NOT** cover the heater with anything that could restrict the air flow.
7. **DO NOT** touch the heater casing or grille when first switched off, as these will be very hot and will take time to cool.
8. **DO NOT** get the heater wet or use in areas of high condensation.
9. **DO NOT** connect other appliances to the same mains socket as the heater.
10. **DO NOT** use this heater with a programmable timer used to switch it on automatically.
11. **DO NOT** leave the heater unattended.

## SAFETY SYMBOLS

These safety symbols appear on the heater.

	<p><b>Hot Surface, DO NOT Touch</b></p>	 <p><b>DO NOT COVER</b></p>	<p><b>DO NOT Cover</b></p>
--	---	--	----------------------------

## SERVICE & REPAIRS

1. If necessary, have your heater repaired by a qualified person using identical replacement parts. This will ensure that the safety of the product is maintained.

Please keep these instructions in a safe place for future reference.

# ELECTRICAL CONNECTIONS

This 110V heater is fitted with a 32 amp, three pin industrial plug to EN 60309 and **MUST** be connected to a 110 volt, 1 phase 50 Hz supply through a suitably fused isolator switch. On no account must a 230V, 13 amp (BS1363) plug be used.

**NOTE:** If a portable 110V transformer is used, make sure it has a rated capacity sufficient to take the load of the heater.

If the heater is hard wired into the electrical system all work must be carried out in accordance with IEE regulations.

If the plug has to be changed due to damage, a replacement should be fitted, following the wiring instructions shown below. The old plug must be disposed of as insertion into a 110v socket could cause an electrical hazard.



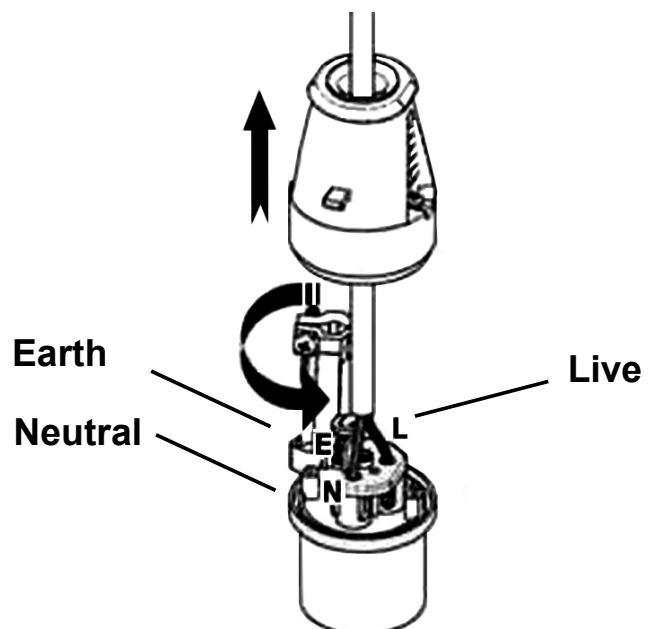
**WARNING: THE WIRES IN THE POWER CABLE OF THIS PRODUCT ARE COLOURED IN ACCORDANCE WITH THE FOLLOWING CODE:  
BLUE = NEUTRAL    BROWN = LIVE    YELLOW = EARTH**

If the colours of the wires in the power cable of this product do not correspond with the markings on the terminals of your plug, proceed as follows.

- The **Blue** wire must be connected to the terminal which is marked **N** or **Neutral**.
- The **Brown** wire must be connected to the terminal which is marked **L** or **Live**.
- The **Yellow** wire must be connected to the terminal which is marked **E** or **Earth**.

If in any doubt, consult a qualified electrician. **DO NOT** attempt any repairs yourself.

**Plug must be BS60309 approved.**



---

## UNPACKING AND ASSEMBLY

---

Before assembling, please check contents against the following list and advise your dealer immediately if any parts are missing.

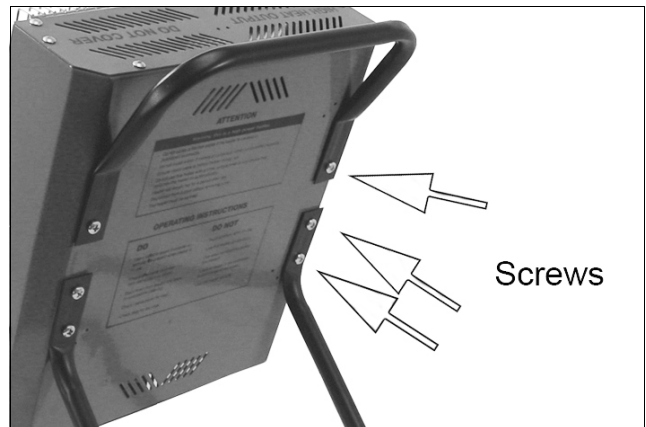
- 1 x Heater
- 2 x Legs
- 1 x Handle
- 1 x Remote Controller (batteries not included)
- 1 x Set fixings (screwed into back of the heater)



**CAUTION: TAKE CARE TO REMOVE ALL PACKAGING MATERIALS FROM WITHIN THE FRONT OF THE HEATER. YOU WILL NEED TO RELEASE THE SCREWS SECURING THE FRONT GRILLE IN ORDER TO DO THIS.**

---

1. Remove the 4 x lower screws from the heater and use them to attach the legs as shown.
2. Repeat with the two remaining screws to fit the handle as shown.
3. **DO NOT** use the heater without fitting the legs.





---

# OPERATION

---



**WARNING: FOR SAFE OPERATION OF THIS HEATER IT IS ESSENTIAL TO READ THESE INSTRUCTIONS BEFORE USE.**

**WARNING: PLEASE NOTE THAT THE HEATING ELEMENTS OF THIS PRODUCT DO NOT GLOW WHILST IN OPERATION. ANY PICTURES SHOWING THIS IN ADVERTISING MATERIAL ARE FOR ILLUSTRATION ONLY.**

---

## USING THE REMOTE CONTROL

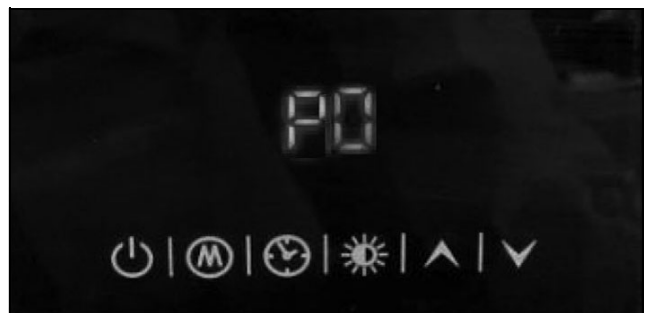
All operations must be done using the remote control.

- 2 x AAA batteries are required and are installed as shown by the diagram found inside the control unit.
- The remote control must be directed at the heater display panel. It has a range of approx 2.5 metres and must be aimed at the correct angle.
- The function of each button on remote control is the same as operation panel.



## MANUAL OPERATION

1. Stand the heater on a firm, level surface and following all safety precautions, connect to a suitable power supply.
  - The heater is equipped with an anti-tilt switch that automatically cuts the power off should the heater tip over. If this happens, stand the heater upright and it will immediately re-set.
2. Switch on the power at the primary switch.
  - The heater will be in Standby with the display showing PO.



3. Press  to turn on the upper heating lamp and the screen will show P1.




4. Press   to select the mode from P1-P6, referring to the different temperature settings.


P1	Only the upper element is working
P2	24°
P3	26°
P4	28°
P5	30°
P6	Both elements are working

- During mode P2-P5 the upper element is working all the time and the lower element will be turned off automatically according to the set temperature.

5. The user can change from mode

P1 and P6 by pressing . The screen will show a cascade effect when in mode P6.





6. To power off the unit, press  again, the heater stops working, and returns to standby with the screen showing 'PO'.
7. Then switch off the main switch and unplug the heater.

## SETTING THE SHUTDOWN TIMER

1. Press  to set the shutdown timer. The time on the screen flickers with initial status 00:00.



2. Press  and  to set the time to turn the heater off.
  - It increases/decreases 1 hour per press.

3. Press  when you finish setting and the heater will be in the countdown mode.



- It will shut down 2 hours later.
4. When the time is up, the heater turns off automatically and enters the standby state P0.

## FUNCTION FOR DETECTING OPENING WINDOWS

1. When the ambient temperature drops over 5°C within 10 minutes, the heater will turn off automatically and enters a standby state with three alarm beeps.

- Users need to turn on the heater manually by pressing- 

---

## CLEANING & MAINTENANCE

---

Always allow the heater to cool down for at least 15 minutes and disconnect it from the mains supply before performing any maintenance tasks.

### PERIODICALLY

1. Inspect the power cable for damage. Undue heat will cause the cable to stiffen and crack. If this is found, have the cable replaced. Check your cable routing and ensure it is well away from the heat source.
2. Should the heater become dirty, disconnect it from the power supply, remove the front guard and wipe the reflector and elements with a clean damp cloth. DO NOT use abrasive cleaners. Take care that no moisture enters the heater.
3. Refer to your CLARKE dealer if internal maintenance is required.
4. When storing the heater, allow it to cool down before storing it in a dry, well ventilated place.

### ELEMENT REPLACEMENT

Ceramic heating elements are long lasting and should not need replacing under normal circumstances. Should this become necessary take the heater to your CLARKE dealer.

---

## ENVIRONMENTAL RECYCLING POLICY

---



Through purchase of this product, the customer is taking on the obligation to deal with the WEEE in accordance with the WEEE regulations in relation to the treatment, recycling & recovery and environmentally sound disposal of the WEEE.

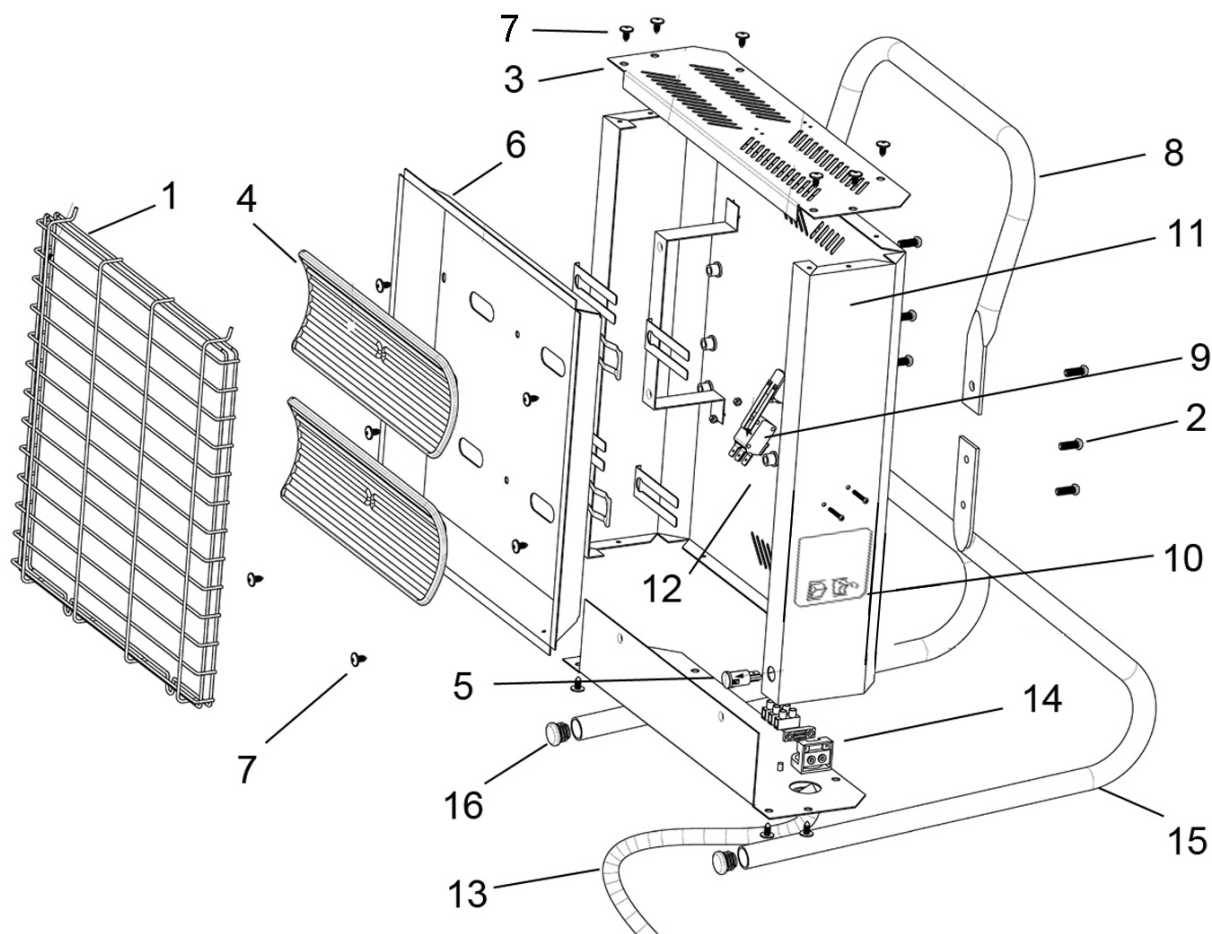
In effect, this means that this product must not be disposed of with general household waste. It must be disposed of according to the laws governing Waste Electrical and Electronic Equipment (WEEE) at a recognised disposal facility.

This product contains valuable raw materials. Metal products should be taken to your local civic amenity site for recycling of metal products. Recycle unwanted materials instead of disposing of them as waste. All unwanted accessories and packaging should be sorted and taken to a recycling centre for disposal in a manner which is compatible with the environment.

## FAULT FINDING

SYMPTOM	PROBLEM	SOLUTION
Heater does not operate, although plugged in and switched on.	Plug is loose/bad connection.	Remove the plug & check the connection of the plug and socket.
	Fuse blown.	Replace if necessary and investigate the cause. If the fuse blows repeatedly, consult your CLARKE dealer.
	No power at socket outlet.	Insert the plug into a suitable socket.
	Tilt safety switch is disabling the heater.	Ensure heater is upright. If the switch does not re-set, consult your CLARKE dealer.
Heater does not respond to remote controller	Batteries defective.	Replace batteries.
	Controller is out of range or not pointing at the display panel.	Move closer or try different angles of pointing the controller at the heater.
	Controller is damaged	Consult your CLARKE dealer.

# COMPONENT PARTS



No	Description
1	Front Guard
2	M6x15 Pan Head Screw
3	Top Panel
4	Ceramic Heat Element
5	Neon Indicator Lamp
6	Reflector Panel
7	No10 x12 Pan Head Screw
8	Handle

No	Description
9	Tip-Over Switch
10	Switch Assembly
11	Casing
12	Screw
13	Power Cable & Plug
14	Cable Clamp
15	Leg
16	End Plug
n/a	Remote Control Unit

A selection of suitable extension leads & plugs is available from your nearest CLARKE dealer, for further information, contact your nearest dealer, or telephone CLARKE International Sales department on 01992 565300.

# DECLARATIONS OF CONFORMITY



Hemml Street, Epping, Essex CM16 4LG

## DECLARATION OF CONFORMITY

This is an important document and should be retained.

We hereby declare that this product(s) complies with the following statutory requirement(s):

- Electromagnetic Compatibility Regulations 2016*
- Electrical Equipment (Safety) Regulations 2016*
- The Restriction of the Use of Certain Hazardous Substances in Electrical and Electronic Equipment Regulations 2012*
- The Eco-design for Energy Related Products and Energy Information (Amendment) Regulation 2019*

The following standards have been applied to the product(s):

- EN IEC 55014-1:2021, EN IEC 55014-2:2021, EN IEC 61000-3-2:2019,
- EN 61000-3-3:2013+A1:2019, EN 60335-2-30:2009+A11:2012+A1:2020, EN 62233:2008
- EN 60335-1:2012+A11:2014+A13:2017+A1:2019+A14:2019+A2:2019, IEC 62321-4:2013+AMD1:2017,
- IEC 62321-5:2013, IEC 62321-6:2015, IEC 62321-7-1:2015, IEC 62321-7-2:2017, IEC 62321-8:2017,

The technical documentation required to demonstrate that the product(s) meet(s) the requirement(s) of the aforementioned legislation has been compiled and is available for inspection by the relevant enforcement authorities.

The UKCA mark was first applied in: 2022

**Product Description:** 2.4kW Electric Ceramic Heater  
**Model number(s):** DEVIL 350C (230V) DEVIL 351C (110V)  
**Serial / batch Number:** N/A  
**Date of issue:** 15/07/2022

Signed:

J.A. Clarke  
Director

DEVIL 351C UKCA Clarke DOC 071522

Page 1 of 1



Fitzwilliam Hall, Fitzwilliam Place, Dublin 2

## DECLARATION OF CONFORMITY

This is an important document and should be retained.

We hereby declare that this product(s) complies with the following directive(s):

- 2014/30/EU Electromagnetic Compatibility Directive*
- 2014/35/EU Low Voltage Equipment Directive*
- 2011/65/EU Restriction of the Use of Hazardous Substances in Electrical and Electronic Equipment Directive*
- 2009/125/EC Eco-Design Directive (EU 2015/1188)*

The following standards have been applied to the product(s):

- EN IEC 55014-1:2021, EN IEC 55014-2:2021, EN IEC 61000-3-2:2019,
- EN 61000-3-3:2013+A1:2019, EN 60335-2-30:2009+A11:2012+A1:2020, EN 62233:2008
- EN 60335-1:2012+A11:2014+A13:2017+A1:2019+A14:2019+A2:2019, IEC 62321-4:2013+AMD1:2017,
- IEC 62321-5:2013, IEC 62321-6:2015, IEC 62321-7-1:2015, IEC 62321-7-2:2017, IEC 62321-8:2017

The technical documentation required to demonstrate that the product(s) meet(s) the requirement(s) of the aforementioned directive(s) has been compiled and is available for inspection by the relevant enforcement authorities.

The CE mark was first applied in: 2022

**Product Description:** 2.4kW Electric Ceramic Heater  
**Model number(s):** DEVIL 350C (230V) DEVIL 351C (110V)  
**Serial / batch Number:** N/A  
**Date of issue:** 15/07/2022

Signed:

J.A. Clarke  
Director

DEVIL 351C CE Clarke DOC 071522

Page 1 of 1

# A SELECTION FROM THE VAST RANGE OF

# Clarke®

## QUALITY PRODUCTS



**AIR COMPRESSORS**  
From DIY to industrial, Plus air tools, spray guns and accessories.

**GENERATORS**  
Prime duty or emergency standby for business, home and leisure.

**POWER WASHERS**  
Hot and cold, electric and engine driven - we have what you need

**WELDERS**

Mig, Arc, Tig and Spot.  
From DIY to auto/industrial.

**METALWORKING**  
Drills, grinders and saws for DIY and professional use.

**WOODWORKING**  
Saws, sanders, lathes, mortisers and dust extraction.

**HYDRAULICS**  
Cranes, body repair kits, transmission jacks for all types of workshop use.

**WATER PUMPS**  
Submersible, electric and engine driven for DIY, agriculture and industry.

**POWERTOOLS**  
Angle grinders, cordless drill sets, saws and sanders.

**STARTERS/CHARGERS**  
All sizes for car and commercial use.



## PARTS & SERVICE: 0208 988 7400

**Parts Enquiries**  
[Parts@clarkeinternational.com](mailto:Parts@clarkeinternational.com)

**Servicing & Technical Enquiries**  
[Service@clarkeinternational.com](mailto:Service@clarkeinternational.com)

SALES: UK 01992 565333 or Export 00 44 (0)1992 565335

**Clarke** INTERNATIONAL Hemnall Street, Epping, Essex CM16 4LG  
[www.clarkeinternational.com](http://www.clarkeinternational.com)